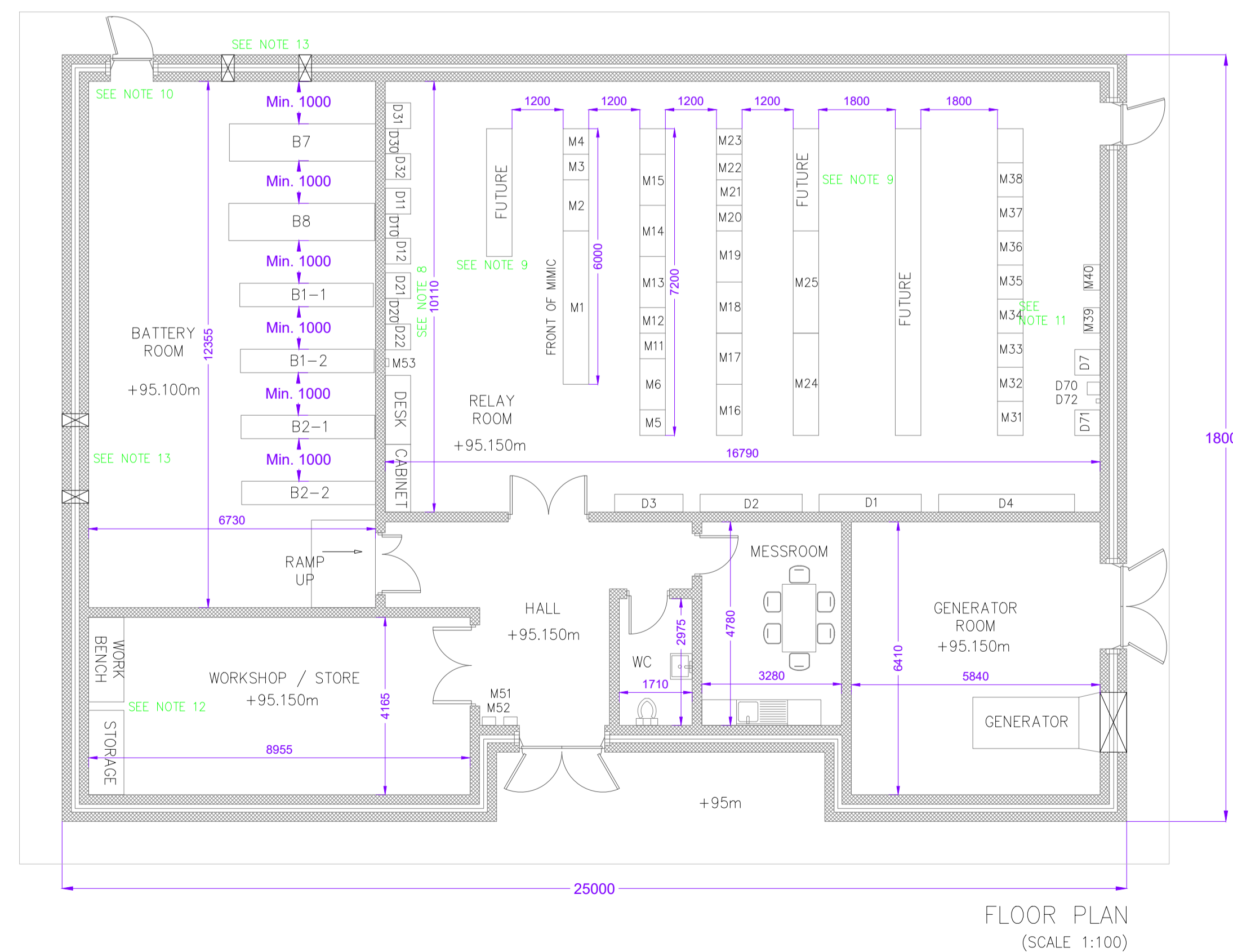
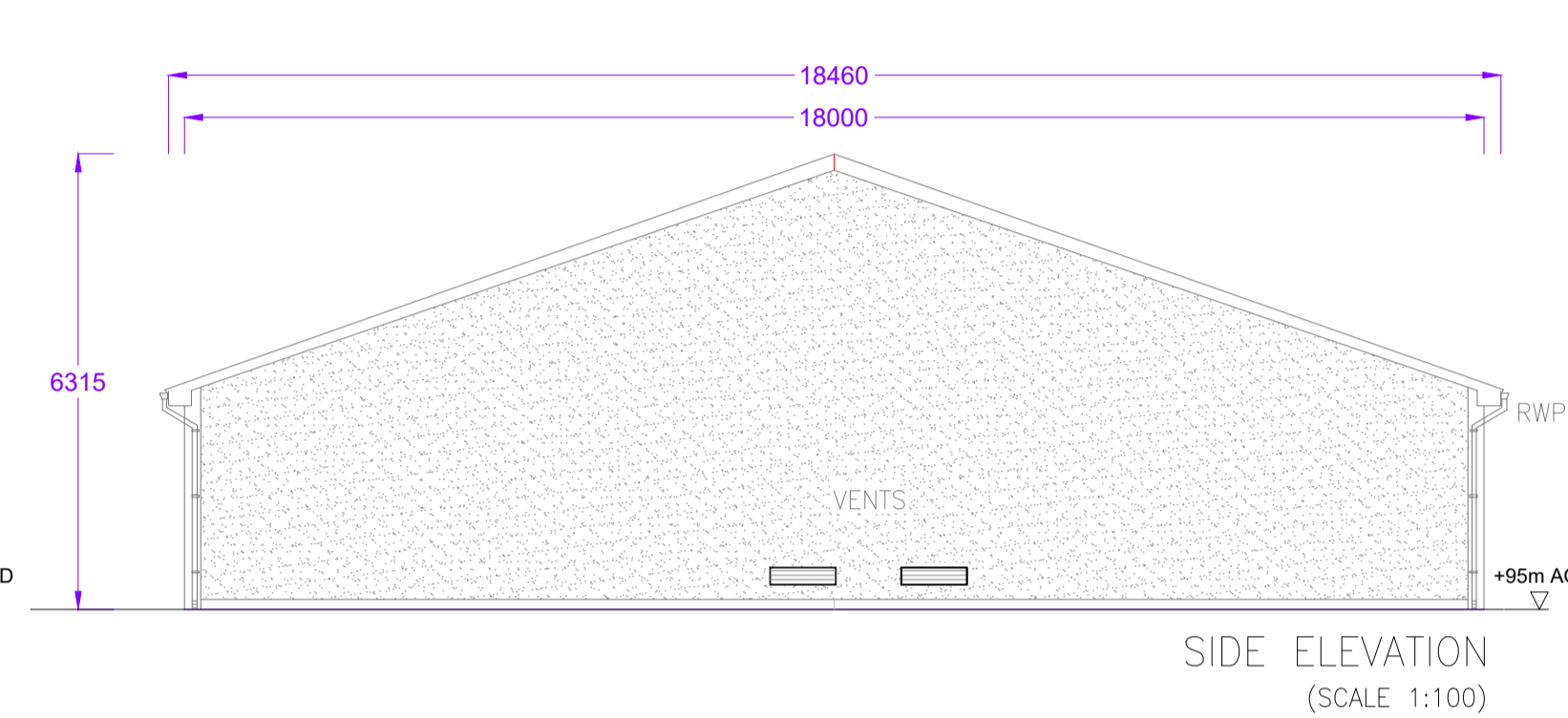
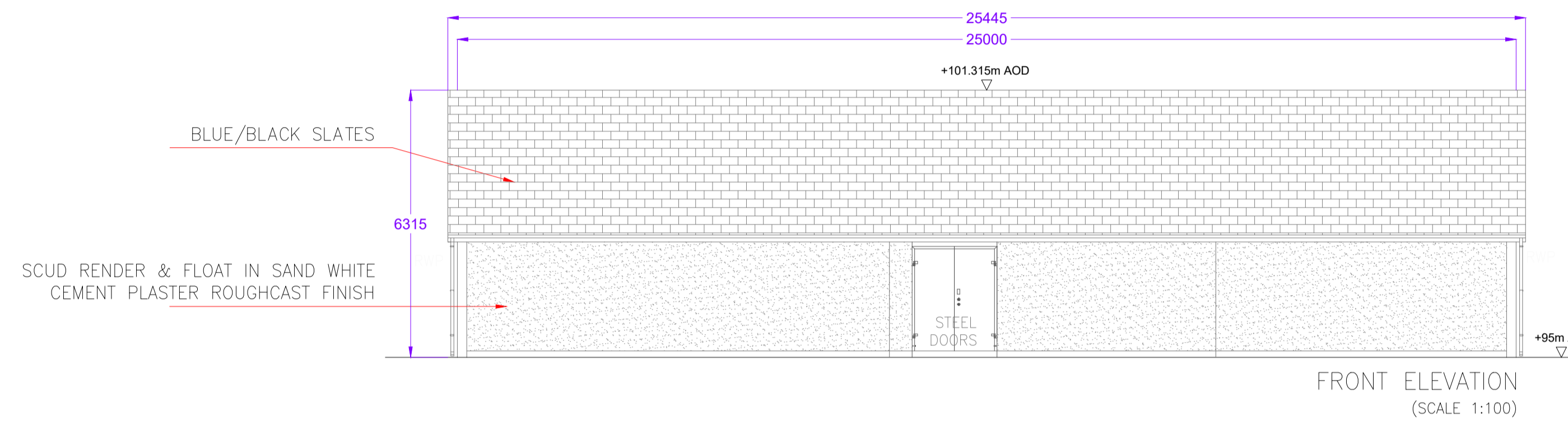
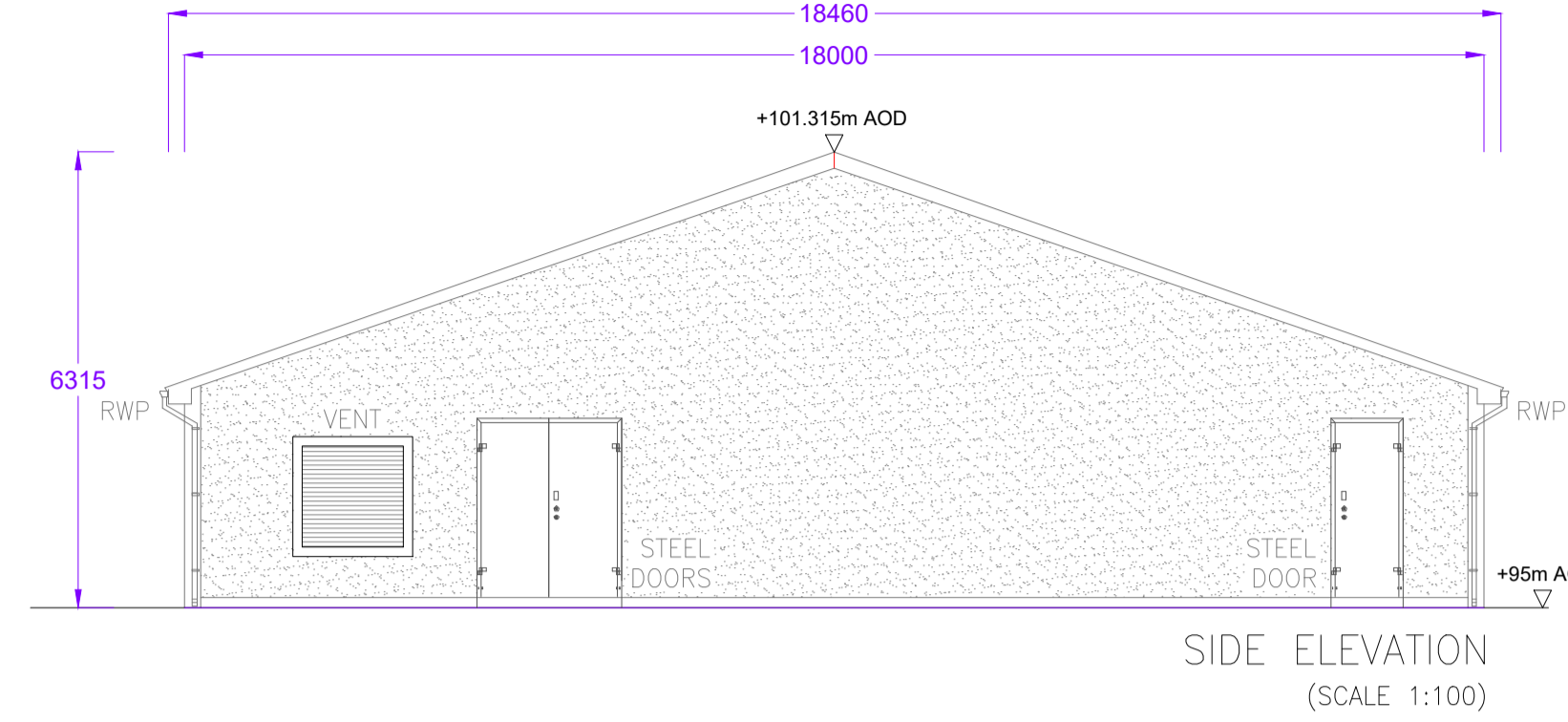
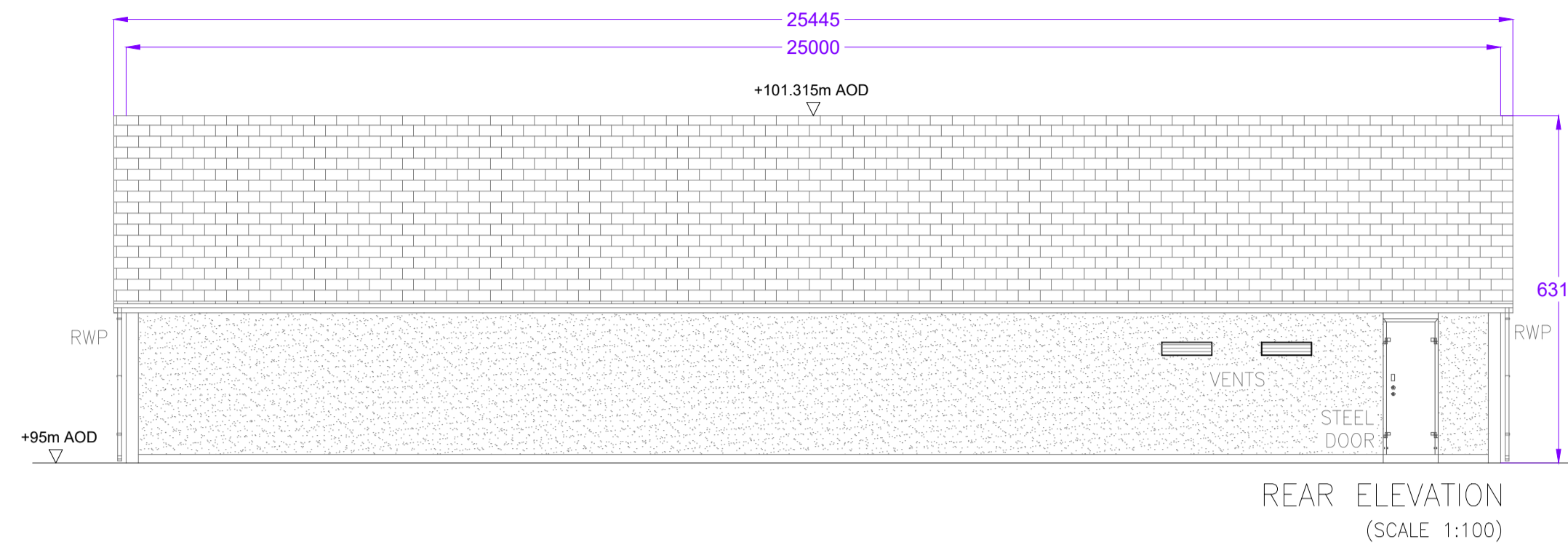
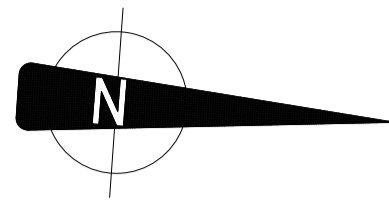


- UNITS SHOWN ARE IN MILLIMETERS.
- THE SUBSTATION BUILDING IS BASED OFF THE LATEST EIRGRID STANDARD (XDN-CR-STND-H-001-R01 001).
- NORTH CARDINAL DIRECTION IS AS PER IPP BUILDING FROM SITE LAYOUT
- THIS DRAWING IS NOT TO BE SCALED.

NO	DATE	DESCRIPTION
P3	20/06/2023	FOR PLANNING
P2	09/11/2022	CLIENT COMMENTS
P1	19/09/2022	CLIENT COMMENTS
P0	27/05/2022	FIRST ISSUE
I/R	DATE	DESCRIPTION



NOTE 1:
THIS DRAWING IS PRODUCED FOR INFORMATION ONLY.

NOTE 2:
THIS DRAWING IS BASED ON TYPICAL REQUIREMENTS FOR A STANDARD 8 BAY RING-TYPE AIS 220kV SUBSTATION WITH NON SCS CONTROL.

NOTE 3:
ALL DIMENSIONS AND REFERENCES GIVEN ARE INDICATIVE AND SHOULD NOT BE USED AS A DETAILED DESIGN.

NOTE 4:
FOR MINIMUM CABINET DIMENSIONS, REFER TO EIRGRID FUNCTIONAL SPECIFICATION XDS-GFS-07-001.

NOTE 5:
FOR MINIMUM ACCESS & EGRESS REQUIREMENTS, REFER TO EIRGRID FUNCTIONAL SPECIFICATION XDS-GFS-00-001.

NOTE 6:
TELECOMS CABINETS TO BE ARRANGED IN LINE WITH TELECOMS PROJECT SPECIFIC REQUIREMENTS.

NOTE 7:
TELECOMS CABINETS, EXCEPT DCC RTU, TO BE SUPPLIED BY ESBN/ESB TELECOMS ON THE BEHALF OF EIRGRID/ESBN. ALL OTHER CABINETS TO BE SUPPLIED BY THE CUSTOMER.

NOTE 8:
BATTERY FUSE BOXES TO BE MOUNTED ON WALL ADJACENT TO BATTERY ROOM.

NOTE 9 (AS ILLUSTRATED ON DRAWING):
ADDITIONAL SPACE IS REQUIRED FOR FUTURE PROTECTION AND TELECOMS CABINETS.

NOTE 10 (AS ILLUSTRATED ON DRAWING):
THE REQUIREMENT FOR AN EXTERNAL FIRE ESCAPE FROM THE BATTERY ROOM SHALL BE DETERMINED BASED ON DETAILED DESIGN AND LOCAL AUTHORITY REQUIREMENTS.

NOTE 11 (AS ILLUSTRATED ON DRAWING):
A TELECOMS EARTH BAR SHALL BE INSTALLED IN CLOSE PROXIMITY TO THE DCC RTU.

NOTE 12 (AS ILLUSTRATED ON DRAWING):
THE WORKSHOP SHALL CONTAIN A HEAVY DUTY WORK BENCH FITTED WITH A VICE AND SUITABLE SHELVING/STORAGE FACILITIES TO HOUSE ALL NECESSARY TOOLS, SPARES AND ACCESSORIES FOR THE SUBSTATION.

NOTE 13 (AS ILLUSTRATED ON DRAWING):
SCREENED VENTS (2 HIGH LEVEL AND 2 LOW LEVEL) ARE TO BE INSTALLED IN THE BATTERY ROOM AS PER IEC 62485-2 ON ADJACENT EXTERNAL WALLS.

NOTE 14 (AS ILLUSTRATED ON DRAWING):
ONLY SINGLE ROW BATTERY STANDS MAY BE LOCATED AGAINST A WALL.

NOTE 15 (AS ILLUSTRATED ON DRAWING):
NO ELECTRICAL EQUIPMENT (INCL. BATTERIES) SHALL BE INSTALLED DIRECTLY IN FRONT OF VENTS.

NOTE 16:
SEPERATE CUSTOMER INTERFACE CABINETS SHALL BE INSTALLED FOR EACH CUSTOMER TRANSFORMER.